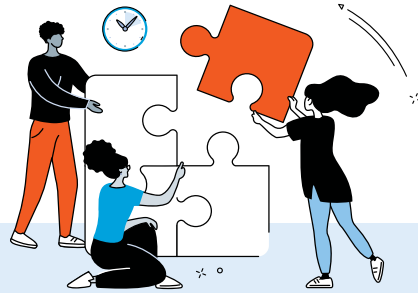




## We've Got Your Back



The Collaborative team has over 50 years of combined experience working in the special education and MLL/ELL fields. We've done the work, we know the laws and policies, we understand best practices...and we want to share that knowledge to empower you. We are here to (quickly) answer your questions and provide resources that spark ideas.

Our **Rapid Response Technical Assist Line** is always open to answer your questions, address your pedagogical concerns, and escalate issues to city agencies. The **Digital Resource Library**, including Special Pops Coordinator Starter Kits, **PDs on Demand**, and **Monthly Compliance Updates** save you time and energy. **Virtual Communities of Practice** and **Peer-to-Peer Roundtable Discussions** bring special populations educators together to discuss, share and learn.

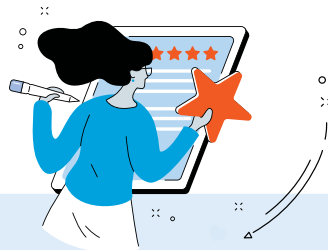
## Partners in Planning



As former school and special populations leads, our team spent years developing, adapting and implementing special populations systems and programs within charter schools. Individual consulting hours with our specialists provide thought partnership and build your capacity to create programs that are not only compliant, but also ensure inclusion, equity, and access for all.

**Classroom Observations and Strategic Planning**, in partnership with school leads and coaches, provide a fresh eye for identifying areas of growth as you seek to shift to more inclusive practices, while our **Customizable PDs** help address staff mindsets and skillsets. **Compliance Audits**, great when onboarding new special populations leads or preparing for renewal, ensure your programming is aligned with all federal, state, and local regulations.

## Developing Your Teachers



Let's face it, the daily bustle often makes it difficult to keep up with the latest research, best practices from leaders in the field and what's working for current practitioners. Don't worry, this is why the Collaborative team exists! We're watching local and national trends, reading the latest studies, and connecting with experts...all so that we can bring that knowledge home to you.

Whether your team is attending the Collaborative's (more than) 100 annual **Professional Development Trainings/Seminars/Conferences** on topics pertinent to best serving students with disabilities and MLLs/ELLs or your leadership team is looking to join **Specialized Cohorts**, including Mental Health and Social Emotional Learning, Equity in Education or Newcomer MLLs/ELLs, we'll make sure you feel supported and empowered.

## Building Leader Capacity



Our team understands that leadership has taken on a whole new meaning these past few years. Whether you are responsible for a school or department, we know leaders are often stretched thin with limited time to tend to their own development. The Collaborative team offers numerous programs specifically for leaders to help "train the trainers" as well as empower principals and EDs seeking to equitably support all students.

Special Education and MLL/ELL leads will appreciate our year-long **Special Populations Leadership Cohorts** that provide insights, shared learning and peer support. The **Onsite Special Populations Leader Coaching** builds the capacity of special populations leads seeking to develop compliant systems and effective inclusive initiatives across grades. Our **PIPELINE Program** and **Principal Circle**, offered to Principals and EDs, address inclusion from the school/network-wide level, focusing on systems, program design and leaders as change agents.

# MEMBERSHIP THAT WORKS FOR YOU 2023 2024

[nycsped.org/2023-24-collaborative-membership/](https://nycsped.org/2023-24-collaborative-membership/)



|   | Select      | Core        | Choice       | Enhanced                                 | Premier                                  |
|---|-------------|-------------|--------------|--|--|
| Representation in Principals' Circle  |             |             |              | ✓  | ✓  |
| Crisis Prevention Institute's Non-Violent Crisis Intervention Program   |             |             |              | 12 seats to Part I<br>4 seats to Part II | 15 seats to Part I<br>5 seats to Part II |
| <b>Membership Advantage.</b> Exclusive access to materials and product trials, discounted trainings, and representation at external events  |             |             |              | ✓  | ✓  |
| <b>PIPELINE Program</b>   |             |             | 10% discount | 15% discount                             | 25% discount                             |
| <b>Personalized Consulting Hours with Collaborative Team.</b> Uses include, Customizable PDs, Compliance Audits, Strategic Planning, Classroom Observations, Content Coaching for Special Pops Leads, Resource Deep Dives |             | 6 hours     |              | 12 hours                                 | 24 hours                                 |
| <b>School Team Learning Cohorts.</b> Newcomer MLL/ELL Cohort, Mental Health & Social Emotional Learning, & Leading for Equity   | 4           | 6           | 15           | 9  | 12                                       |
| <b>Academic Intervention Support Trainings.</b> E.g. Wilson, Orgon-Gillingham, SPIRE, Do the Math, etc.)  | 5%          | 10%         | 15%          | 15%                                      | 20%                                      |
| <b>Tickets for Virtual and In-Person Trainings &amp; Workshops</b>  | 18/semester | 26/semester | 52/semester  | 38/semester                              | 46/semester                              |
| <b>Annual Education Conference</b>  | 2           | 4           | 12           | 6  | 10                                       |
| <b>Special Populations Leadership Cohorts</b>   | ✓           | ✓           | ✓            | ✓  | ✓  |
| <b>Participation in Virtual Communities of Practice (MLL/ELL, Counselors &amp; Social Workers &amp; High School)</b>  | ✓           | ✓           | ✓            | ✓  | ✓  |
| <b>Peer-to-Peer Roundtable Discussions</b>  | ✓           | ✓           | ✓            | ✓  | ✓  |
| <b>Unlimited Access to PDs on Demand &amp; Online Resource Library</b>  | ✓           | ✓           | ✓            | ✓  | ✓  |
| <b>Special Populations Job Postings</b>   | ✓           | ✓           | ✓            | ✓  | ✓  |
| <b>Special Populations Legal Mandates &amp; Best Practices Seminars</b>   | ✓           | ✓           | ✓            | ✓  | ✓  |
| <b>Special Education and MLL/ELL Compliance &amp; Advocacy Support</b>  | ✓           | ✓           | ✓            | ✓  | ✓  |
| <b>Rapid Response Technical Assistance Line &amp; Monthly Compliance Updates</b>  | ✓           | ✓           | ✓            | ✓  | ✓  |
| Registration & Payment Received after 8/7/2023  | \$7,250     | \$10,350    | \$15,250     | \$17,500                                 | \$20,750                                 |

## Select

Access is the key at this level. Get your questions answered, tap into our full suite of digital resources and PDs, stay on top of issues and trends, and take advantage of opportunities to develop your staff.

## Core

This membership level serves as the baseline for true engagement. You have access to more trainings as well as some personal consulting hours for onsite supports, including customized PDs (an average of once per semester).

## Choice

If you want to maximize your schools' access to our professional development opportunities (50+ events per semester on a wide range of special populations. MLL and inclusion topics), this level will maximize your team's knowledge!

## Enhanced

You're committed to regularly tapping into the expertise of the Collaborative team! With a robust number of personal consulting hours and PD seats, we can help your school develop and customize trainings for your educators and advance your special populations programming.

## Premier

Your school is all in! Our extensive partnership will bolster your capacity at all levels within your school, empowering your leaders and educators, supporting growth and best practices, and regular visits and personalized trainings to meet the unique needs of your learners.